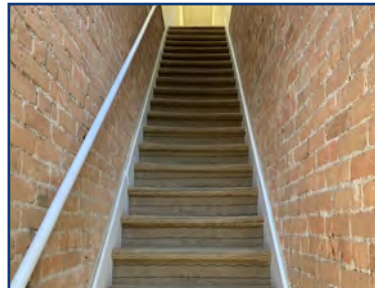
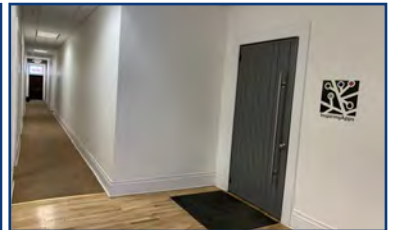


1045 Pearl Street,
Boulder, CO

2,300 Square Feet

Office Space Available!

- Second level office space located in Downtown Boulder
- Pearl Street views
- Open floorplan
- Restroom in unit
- Alley parking available per a separate lease agreement
- Great natural light
- Hardwood flooring
- Beautiful wood finishes
- Class A Office Space with Excellent proximity to the Pearl Street Mall



TEBO
PROPERTIES

Contact us for more information:

leasing@teboproperties.com

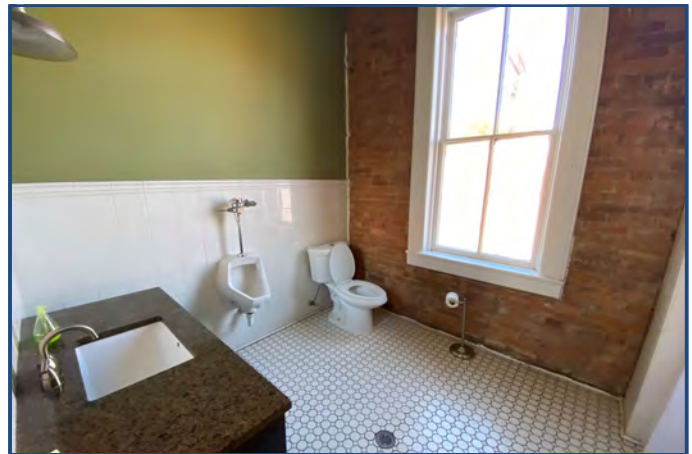
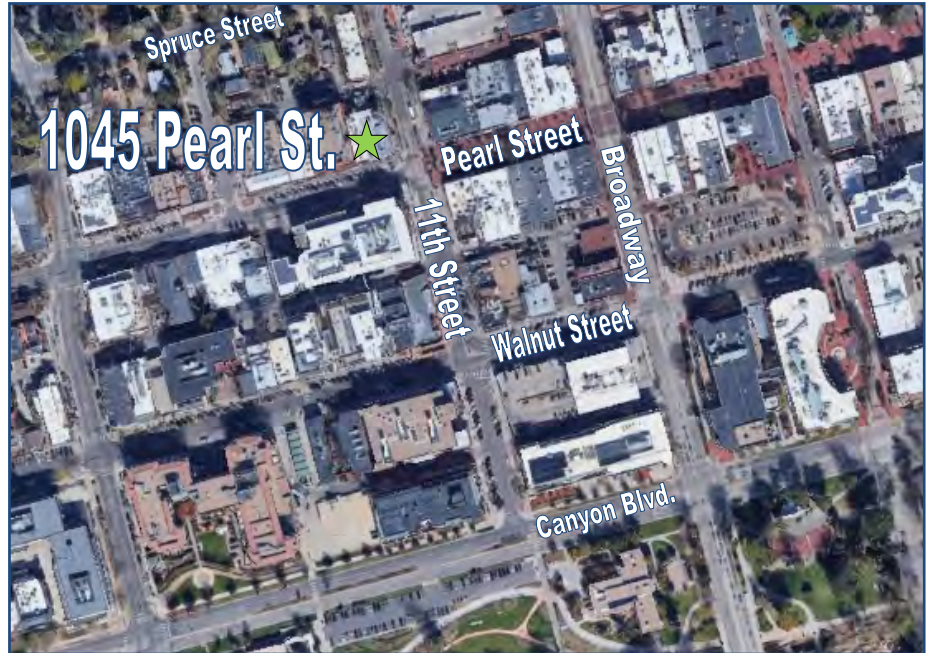
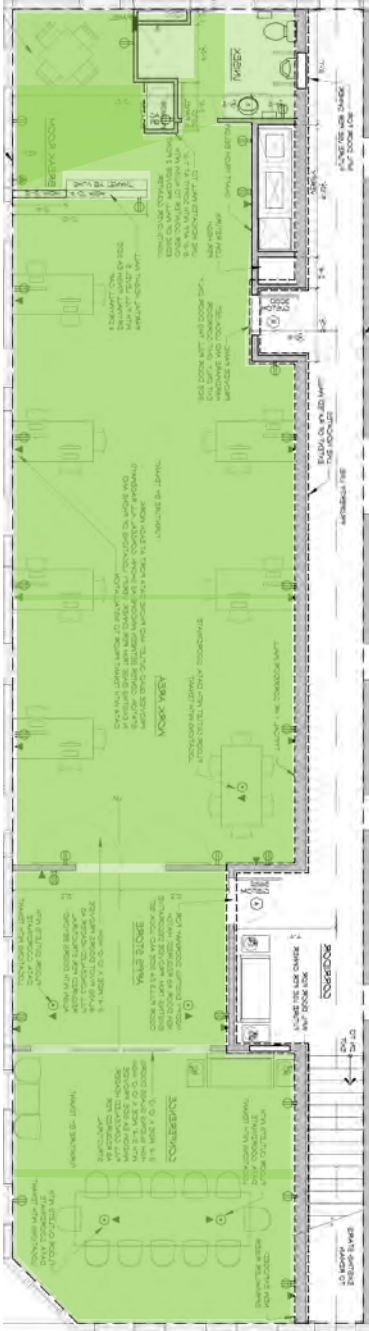
303-447-8326

www.TEBOproperties.com




TEBO
PROPERTIES

1045 Pearl Street, Boulder, CO



Unit	Square Footage	Price
1045	2,300	\$27.50 + \$17.78 NNN = \$8,678.67/Month



 - Available for Lease



TEBO
PROPERTIES

Contact us for more information:
leasing@teboproperties.com
 303-447-8326
www.TEBOproperties.com