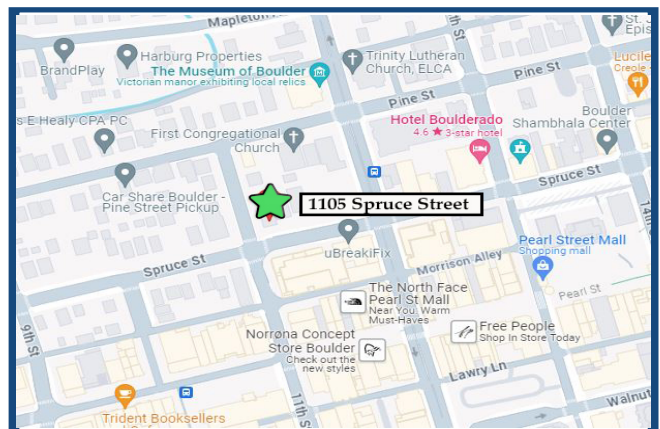
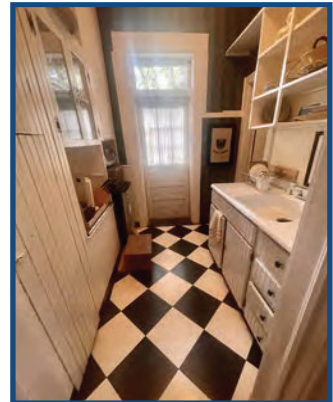


**1105 Spruce Street
Boulder, CO**

**Second and Third Floor
Office Space**

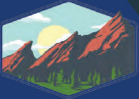
Office Space Available!

- Historic building
- Prime location in downtown Boulder
one block from Pearl Street
- On the corner of 11th & Spruce
- Heavy foot traffic
- Lots of natural light
- Short term office space available
- 2nd and 3rd floor offices
- Conveniently located adjacent to city
parking garage (spaces available)
- Common area amenities include,
kitchenette, bathrooms, front porch



TEBO
PROPERTIES

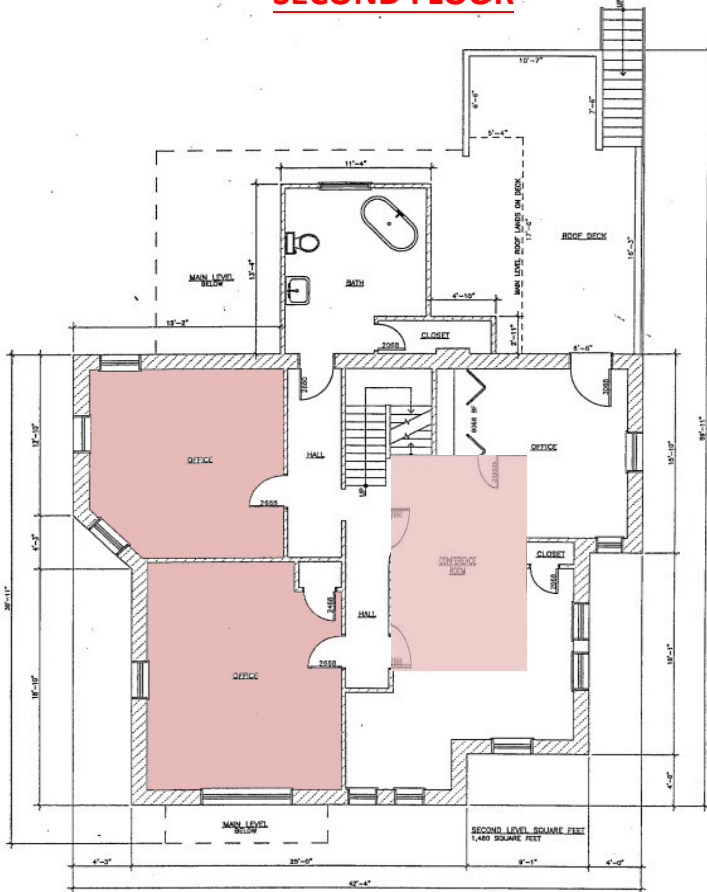
Contact us for more information:
leasing@teboproperties.com
303-447-8326
www.TEBOproperties.com



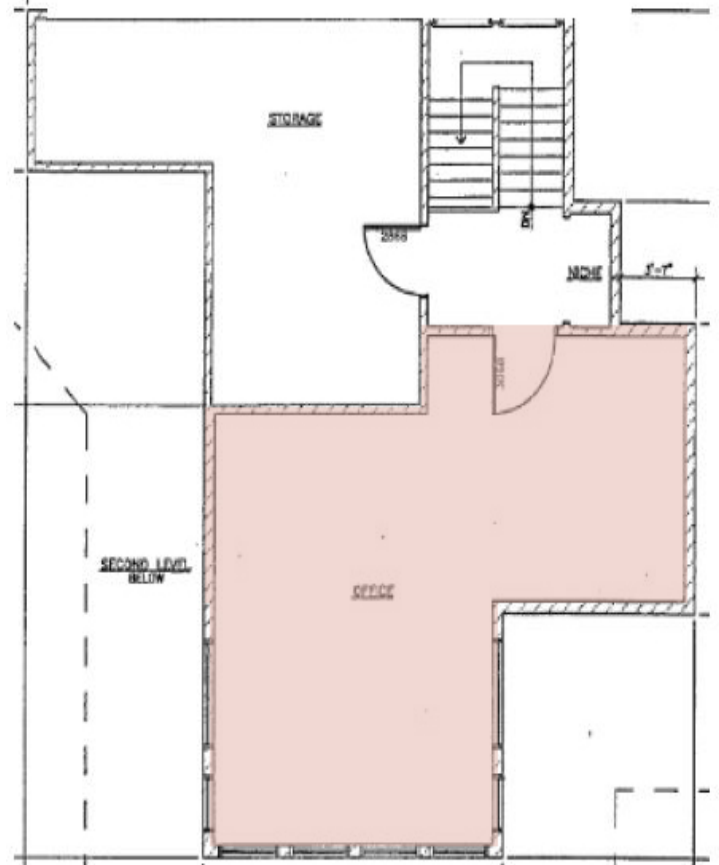
TEBO
PROPERTIES

1105 Spruce Street, Boulder, CO

SECOND FLOOR



THIRD FLOOR



Unit	Square Footage	Price
1105	First Floor	FULLY LEASED!
1105	Second Floor	CALL FOR RATE!
1105	Third Floor	CALL FOR RATE!



TEBO
PROPERTIES

Contact us for more information:
leasing@teboproperties.com
 303-447-8326
www.TEBOproperties.com