

OFFICE SPACE FOR LEASE

1300 Walnut Street, Boulder, CO 80302



ABOUT THE BUILDING

Creative tech space available for lease at 1300 Walnut. This two-story building provides an unbeatable Downtown Boulder location on the corner of 13th & Walnut just steps away from all the action that Downtown Boulder has to offer.

- Creative, open work spaces with bright, modern finishes
- Great downtown Boulder location
- Steps away from Pearl Street Mall and RTD Transit Station

CHAD HENRY

chenry@wwreynolds.com

DREW WEIMAN

drew@wwreynolds.com

THE
W.W. Reynolds
COMPANIES

P. 303-442-8687

www.wwreynolds.com

1300 WALNUT STREET, BOULDER, CO 80302
SUITE 10



UNIT
Suite 10



RENT
\$1,995/Month

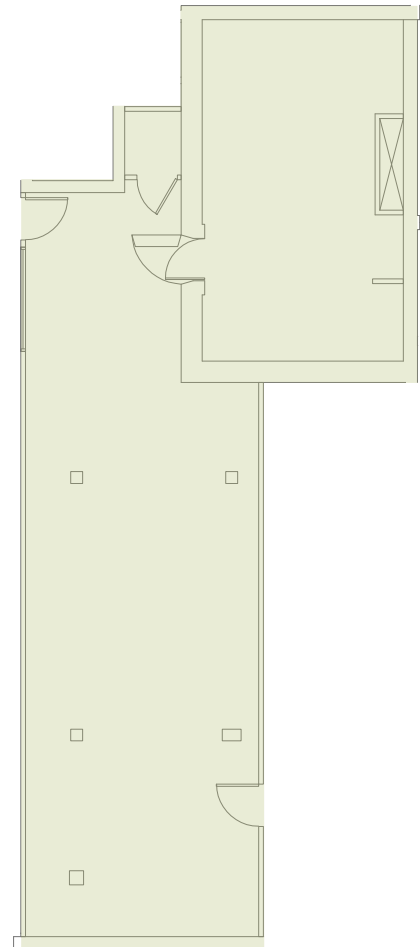


SIZE
1,674 SF



AVAILABLE
Immediately

FLOOR PLAN



CHAD HENRY

chenry@wwreynolds.com

DREW WEIMAN

drew@wwreynolds.com

1300 WALNUT STREET, BOULDER, CO 80302
SUITE 20



UNIT

20



RENT

\$10.00 NNN



SIZE

4,264 SF



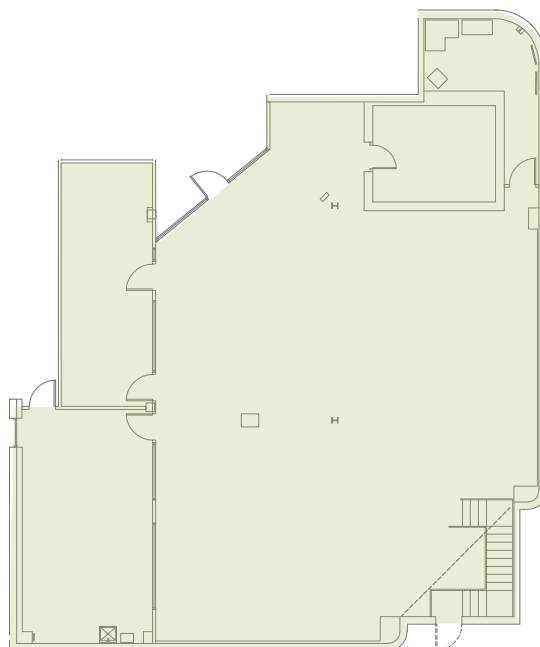
AVAILABLE

Immediately

SPACE NOTES

This 4,000+ square foot space features an open work environment with exposed ductwork and ceilings, concrete flooring and bright, creative finishes. Ideal for a growing company in need of creative, open space in a perfect downtown location.

FLOOR PLAN



CHAD HENRY

chenry@wwreynolds.com

DREW WEIMAN

drew@wwreynolds.com