

PEARL STREET OFFICE SPACE FOR LEASE

1320 Pearl Street, Boulder, CO 80302

THE CARTWRIGHT BUILDING



ABOUT THE BUILDING

Office suites available for lease at The Cartwright Building, an office / retail building located on the historic Pearl Street Mall. Situated between 13th and 14th across from the Boulder Court House, this building provides all of Downtown Boulder's fantastic shops and restaurants just steps away from your door.

- 836 - 1,047 square feet available
- Upgraded finishes throughout the building
- Rooftop deck area

CHAD HENRY

chenry@wwreynolds.com

DREW WEIMAN

drew@wwreynolds.com

THE
W.W. Reynolds
COMPANIES

P. 303-442-8687

www.wwreynolds.com

1320 PEARL STREET, BOULDER, CO 80302

FIRST FLOOR



UNIT

110



RENT

\$20.00 NNN



SIZE

836 SF



AVAILABLE

Immediately



UNIT

120



RENT

\$20.00 NNN



SIZE

1,047 SF



AVAILABLE

Immediately



CHAD HENRY

chenry@wwreynolds.com

DREW WEIMAN

drew@wwreynolds.com

1320 PEARL STREET, BOULDER, CO 80302

FLOOR PLAN

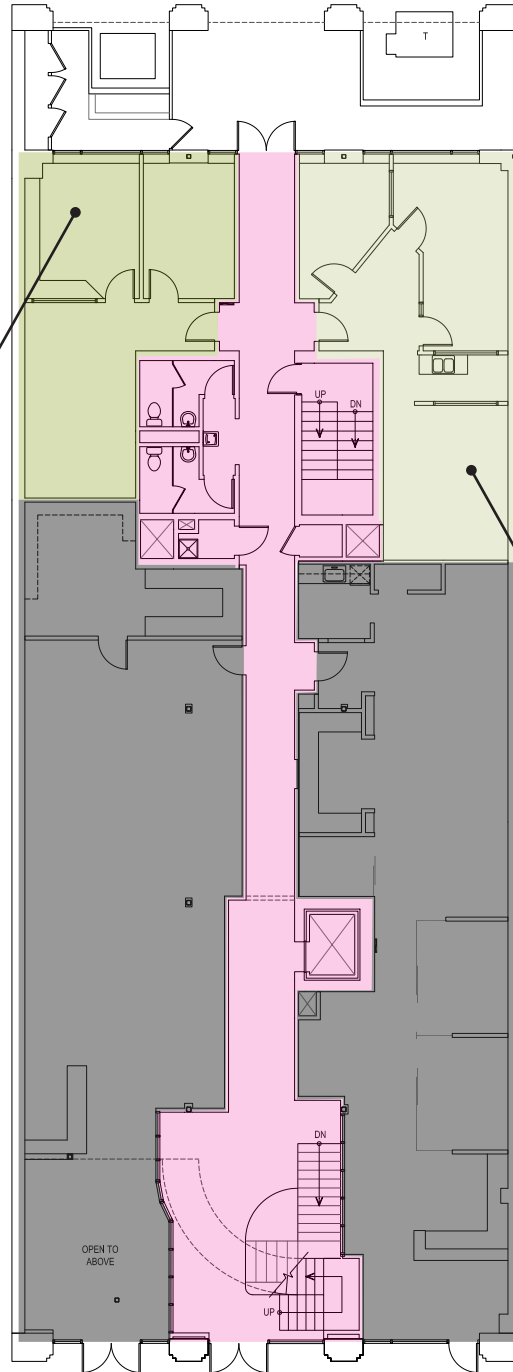


LEVEL 1

Unit 110	
Size	836 SF
Rent	\$20.00 NNN
Available	Immediately

Unit 120	
Size	1,047 SF
Rent	\$20.00 NNN
Available	Immediately

- LEASED
- AVAILABLE
- COMMON AREA



CHAD HENRY

chenry@wwreynolds.com

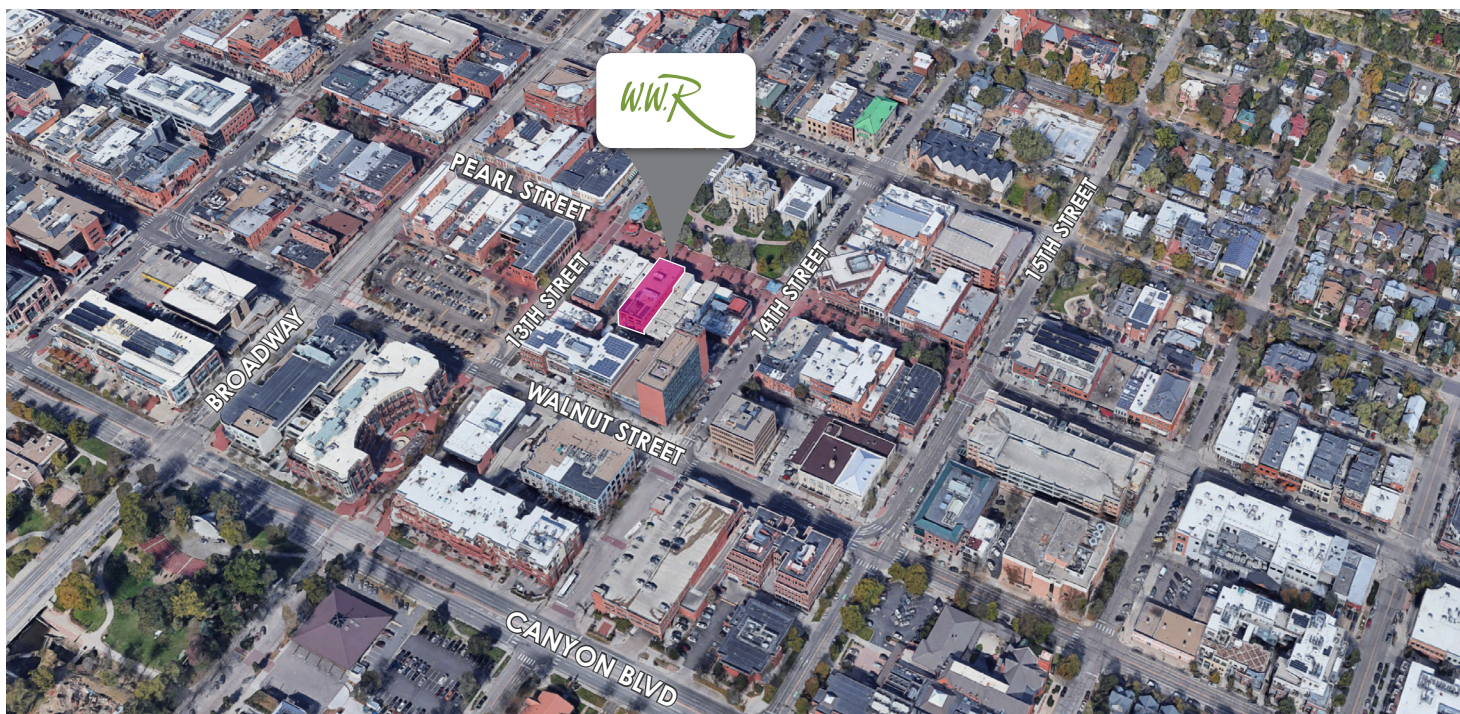
DREW WEIMAN

drew@wwreynolds.com



1320 PEARL STREET, BOULDER, CO 80302

LOCATION



LOCATION NOTES:

Located directly on the bricks of the Historic Pearl Street Mall, The Cartwright Building easily provides an unbeatable Downtown Boulder location with all the amenities you could ever dream of just a short walk from your front door.

CHAD HENRY

chenry@wwreynolds.com

DREW WEIMAN

drew@wwreynolds.com

WWW.WWREYNOLDS.COM
P. 303-442-8687

