

OFFICE SPACE FOR LEASE

1800 Broadway, Boulder, CO 80302

ONE BOULDER PLAZA



ABOUT THE BUILDING

An upscale mixed-use development in the heart of Downtown Boulder, One Boulder Plaza is spanned across 2 square city blocks and features a full service fitness center, underground parking and 24/7 on-site security.

- Class "A" building
- Great natural light and outdoor courtyards
- Steps away from Pearl Street Mall and RTD Transit Station

CHAD HENRY

chenry@wwreynolds.com

DREW WEIMAN

drew@wwreynolds.com

THE
W.W. Reynolds
COMPANIES

P. 303-442-8687
www.wwreynolds.com

1800 BROADWAY, BOULDER, CO 80302

SUITE 100



SIZE

2,165 SF*



RENT

\$30.00 NNN



AVAILABLE

Immediately



OP EX

\$17.63 / SF

(including utilities)

SPACE NOTES

Lease suite 100, comprised of 2,165 SF of office space with a front entry, open area, one private office/small meeting space, a small storage room and a kitchen space; *or combine suites 100 and 105 for up to 3,489 square feet of nice office space with a light and bright open bull pen or conference room area. This space has direct access to a small outdoor courtyard and multiple points of entry.



CHAD HENRY

chenry@wwreynolds.com

DREW WEIMAN

drew@wwreynolds.com

1800 BROADWAY, BOULDER, CO 80302

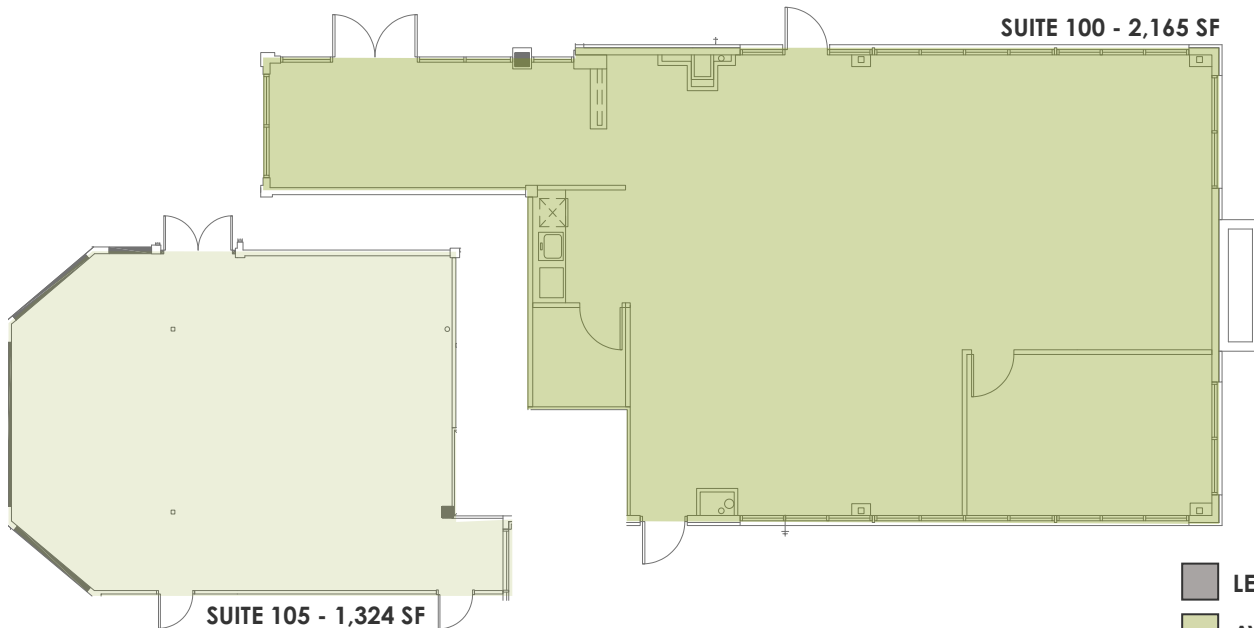
FLOOR PLAN



LEVEL 1



SUITE 100 - 2,165 SF



SUITE 105 - 1,324 SF

- LEASED
- AVAILABLE
- COMMON AREA

CHAD HENRY

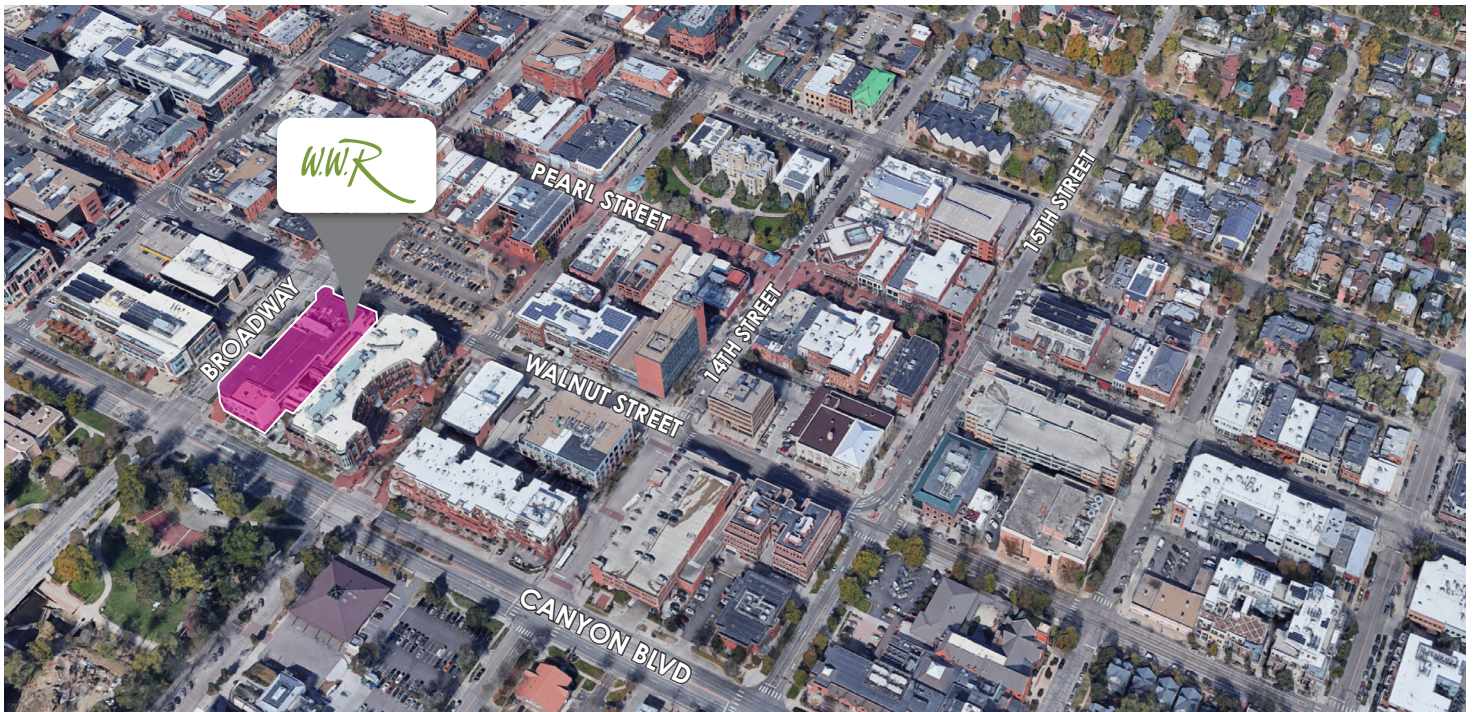
chenry@wwreynolds.com

DREW WEIMAN

drew@wwreynolds.com



1800 BROADWAY, BOULDER, CO 80302
ONE BOULDER PLAZA



LOCATION NOTES:

Spanning across two square city blocks, One Boulder Plaza offers a Downtown Boulder location second to none. Located just one block off the Historic Pearl Street Mall, near the RTD Transit Center and providing easy access in and out of town via Canyon Boulevard, One Boulder Plaza is the best of all worlds.

CHAD HENRY

chenry@wwreynolds.com

DREW WEIMAN

drew@wwreynolds.com

WWW.WWREYNOLDS.COM
P. 303-442-8687

