

SINGLE OFFICE SUITES FOR LEASE

1920 13th Street, Boulder CO 80302

THE JAMES BUILDING



ABOUT THE BUILDING

This 1900s Queen Anne style historic building lies in the heart of downtown Boulder. It features well appointed second-story office suites and popular restaurant spaces below.

- Single office suites available for lease
- 2-story historic mixed-use building in the heart of Downtown Boulder
- Walking distance to the Pearl Street Mall & RTD Transit Station
- CAGID District RTD Eco Passes Available Free to full time employees

CHAD HENRY

chenry@wwreynolds.com

DREW WEIMAN

drew@wwreynolds.com

THE
W.W. Reynolds
COMPANIES

P. 303-442-8687

www.wwreynolds.com

1920 13TH STREET, BOULDER, CO 80302

SINGLE SUITES



UNIT
Suite C3



RENT
\$950 / Month
(includes utilities)



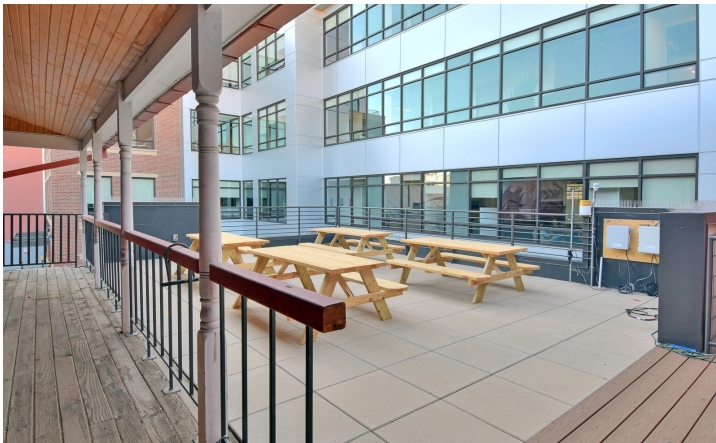
SIZE
368 SF



AVAILABLE
August 1, 2024

SPACE NOTES:

Single office suite available for lease in the James Building. Enjoy all the amenities of a bustling downtown Boulder, but in the serenity of a quiet, second story office away from the activity. This group of office suites is entered directly off 13th Street and leads to a common waiting area.



CHAD HENRY

chenry@wwreynolds.com

DREW WEIMAN

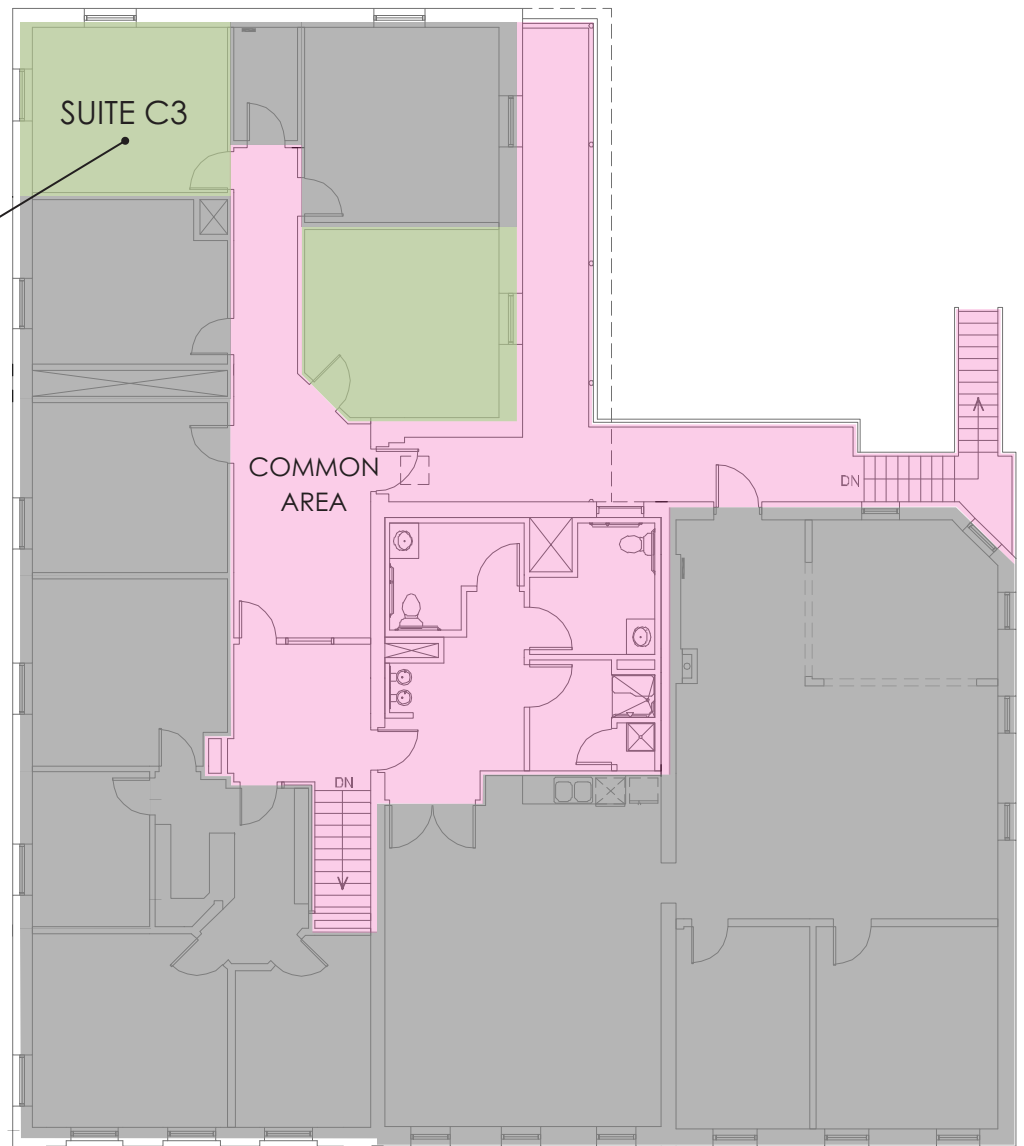
drew@wwreynolds.com

1920 13TH STREET, BOULDER, CO 80302




FLOOR PLAN



FLOOR 2



SUITE C3	
Size	368 SF
Rent	\$950 / month
Available	August 1, 2024

-  LEASED
-  AVAILABLE
-  COMMON AREA

CHAD HENRY
chenry@wwreynolds.com

DREW WEIMAN
drew@wwreynolds.com

