

OFFICE FOR LEASE

1722 14th St, Boulder, CO 80302



# THE RINK BUILDING

## ABOUT THE BUILDING

Situated between Canyon Blvd and Arapahoe Avenue, the historic Rink Building provides a great central downtown Boulder location two blocks from the Pearl Street Mall & one block from the RTD Transit Station.

- Easy access
- Covered parking
- Free CAGID District RTD Eco-Passes available for FT Employees
- Suite 220 has access to a shared outdoor patio shaded by trees just above Boulder Creek to enjoy.

**CHAD HENRY**

chenry@wwreynolds.com

**DREW WEIMAN**

drew@wwreynolds.com

THE  
*W.W. Reynolds*  
COMPANIES

P. 303-442-8687  
www.wwreynolds.com

1722 14TH ST, BOULDER, CO 80302

# SUITE 220



**UNIT**  
220



**RENT**  
\$19.50 NNN

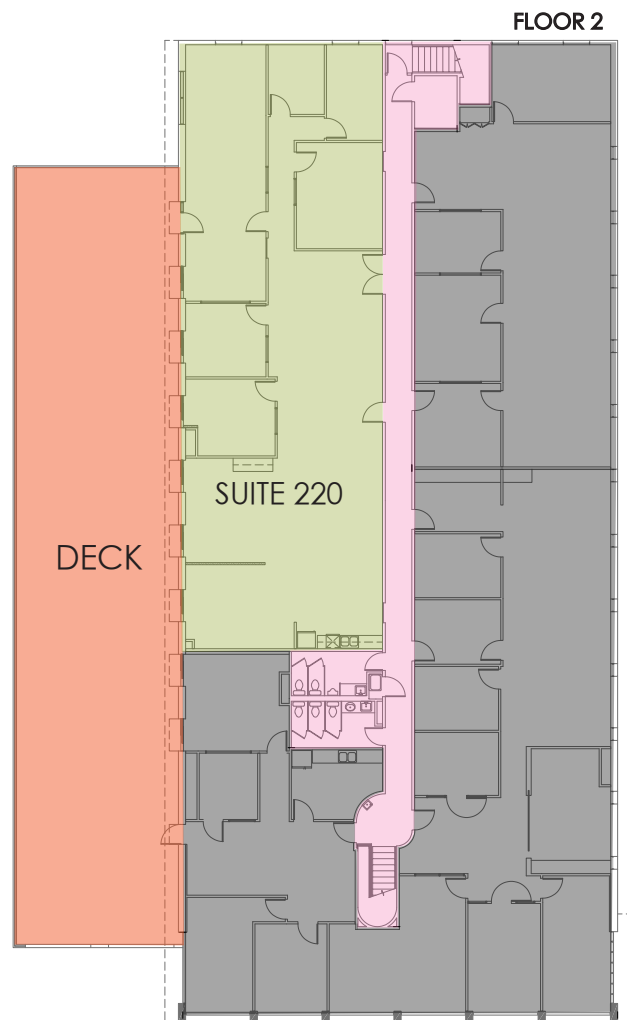


**SIZE**  
3,280 SF



**AVAILABLE**  
Immediately

## FLOOR PLAN



**CHAD HENRY**

chenry@wwreynolds.com

**DREW WEIMAN**

drew@wwreynolds.com